

BACKUP LIGHTROOM FILES

User Guide

Version 1.0

CONTENTS

1 Overview	2
2 System Requirements & Installation	3
2.1 System Requirements	3
2.2 Installation	3
3 Program Usage	5
3.1 Command Line Parameters	5
3.2 Root Directories	7
3.3 Examples	8
A End-User License Agreement	10

1 OVERVIEW

“BackupLightroomFiles” is a command line tool to backup images referenced by an Adobe Photoshop Lightroom¹ catalog. The files to backup may be limited by their Lightroom rating and will be copied to a user specified target folder.

BackupLightroomFiles has *read-only* access to any catalog, i. e. the program will never alter a Lightroom catalog!

BackupLightroomFiles backs up files referenced from a Lightroom catalog, not the catalog itself, however!

¹Adobe Photoshop Lightroom is a registered trademark by Adobe Systems Inc.

2 SYSTEM REQUIREMENTS & INSTALLATION

2.1 SYSTEM REQUIREMENTS

BackupLightroomFiles requires Windows XP, Windows Vista or Windows 7. Furthermore it requires an installed .NET Framework 2.5 or higher.

BackupLightroomFiles is compatible with Lightroom 2.x, 3.x and 4.x.¹

Thought this program queries Lightroom catalogs there is no need for an installed Lightroom program. However, if Lightroom is installed it must be closed when running BackupLightroomFiles, for it will lock the catalog file otherwise and prevent BackupLightroomFiles from reading the catalog.

2.2 INSTALLATION

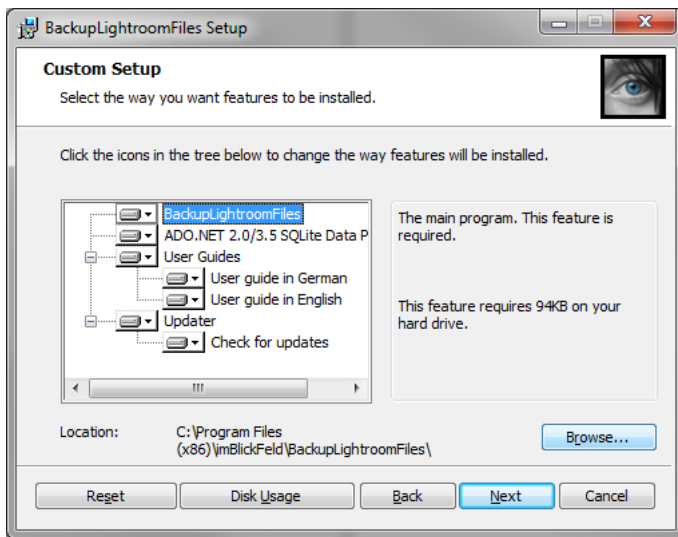
If not done yet, the program can be downloaded from <http://software.imblickfeld.de/>. To install the program run the downloaded BackupLightroomFiles_Setup.msi.

Your first step is to accept the license agreement. This program is "Postcardware". If you enjoy this program or think it is helpful, why not sending me a nice postcard? The full license agreement is attached in A of this user guide.

The next step is to decide which components shall be installed and where. By default this is your default program files folder (such as "C:\Program Files\imBlickFeld*program name*"). BackupLightroomFiles consists of four components:

¹The program has not been tested with Lightroom 1. It has also never been tested with Lightroom 3 catalogs, though it should be compatible since it is with Lightroom 2 and 4.

1. *BackupLightroomFiles* – this is the main program and must be installed to be able to use the program.
2. *ADO.NET 2.0/3.5 SQLite Data Provider* – this runtime library is required to access the lightroom catalog (that are SQLite databases). If this is already installed it's not required to be installed once again, however most likely it is not yet on your system (Lightroom does not install this library).
3. *User Guides* – this user guide alternatively in English and German language.
4. *Updater* – this program (automatically) looks for new versions for this program and keeps it updated.

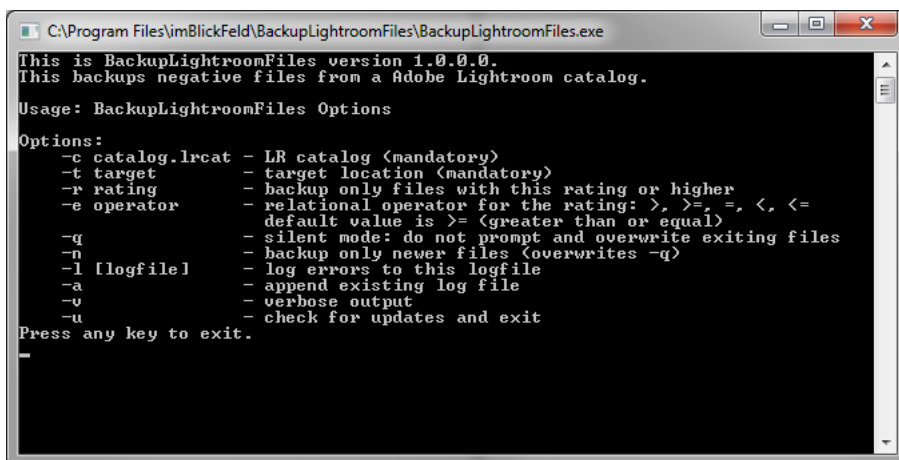


"Next" and "Install" copies all required files and registers all preferences. A start menu folder will be created.

If you do not want to use the program at any later point it can be uninstalled using the control panel.

3 PROGRAM USAGE

BackupLightroomFiles is a command line program. It has no graphical user interface, but can be used using command line parameters. It is designed to run without further user action in automated environments such as batch files, schedules Windows tasks or third party backup tools and therefore does not need any graphical user interface.



```
C:\Program Files\imBlickFeld\BackupLightroomFiles\BackupLightroomFiles.exe
This is BackupLightroomFiles version 1.0.0.0.
This backups negative files from a Adobe Lightroom catalog.
Usage: BackupLightroomFiles Options
Options:
-c catalog.lrcat - LR catalog (mandatory)
-t target       - target location (mandatory)
-r rating       - backup only files with this rating or higher
-e operator     - relational operator for the rating: >, >=, =, <, <=
                  default value is >= (greater than or equal)
-q             - silent mode: do not prompt and overwrite exiting files
-n             - backup only newer files (overwrites -q)
-l [logfile]   - log errors to this logfile
-a             - append existing log file
-v             - verbose output
-u             - check for updates and exit
Press any key to exit.
```

3.1 COMMAND LINE PARAMETERS

The program understands the following parameters:

- `-c catalog.lrcat`
Specify the Lightroom catalog to query. This parameter is mandatory.

- `-t "target location"`
Specify the target folder any images shall be copied to. This parameter is mandatory.
- `-r rating`
Specify the Lightroom image rating (stars) to limit the files to backup. If not given all images from the catalog shall be copied.
- `-e operator`
Specify a relational operator for the rating above. Valid values are:
 - e > all images with rating > *rating* will be copied.
 - e >= all images with rating ≥ *rating* will be copied.
 - e = all images with rating = *rating* will be copied.
 - e <= all images with rating ≤ *rating* will be copied.
 - e < all images with rating < *rating* will be copied.

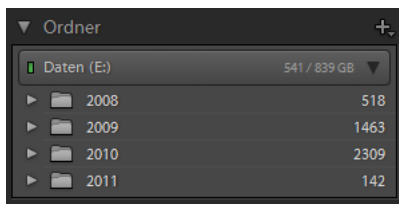
This parameter will be ignored if `-r` is not given. If this parameter is omitted, `-e >=` will be used by default.
- `-s`
If given, no files will be copied, but its filenames will be printed.
Together with `-s` only filenames shall be written to `stdout` to be piped (`|`) later.
- `-q`
If given, the program will run in “silent mode” and will not prompt for any user input. Use this parameter when the program runs in any unattended environment such as scheduled Windows tasks or within automated backups.
If `-n` is not set, parameter `-q` tells the program to overwrite existing files without further asking.
- `-n`
If given, only newer (or not yet existing) files will be copied. If a file already exists in the target location and has not changed since the last backup it will not be copied (`-n` overrides `-q` at this point).
- `-l logfile`
Specify whether (and where) to log any error messages or information to a log file. *logfile* specifies the file path and name of the log file. If `-l` is set without any logfile given, the program will create one in the current directory.
Logging errors is recommended particularly in unattended environments to check if everything went well from time to time.
Note: This parameter is an *l* character, not a 1.
- `-a`
If given, an existing log file won't be overwritten. Any information will be appended instead. This parameter will be ignored if `-l` is not given.
- `-v`
Use verbose output and log additional information to the log file. Using this parameter logs further error information and is therefore recommended for trouble shooting.
- `-u`
If given, the BackupLightroomFiles only checks for new program updates. All other parameters will be ignored. No files will be copied.

3.2 ROOT DIRECTORIES

Lightroom catalogs support multiple root folders, while a root folder is the uppermost folder within a catalog.

BackupLightroomFiles finds the common path of all roots and “omits” this base path on the target location. An example may clarify this feature:

One catalog contains contains 4 roots, one for every year.



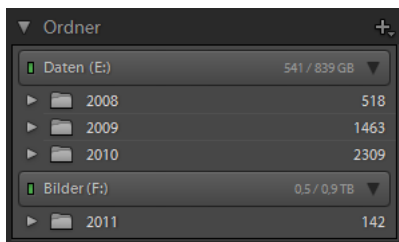
All root folders are located parallel within the file system:

- E:\Pictures\2008
- E:\Pictures\2009
- E:\Pictures\2010
- E:\Pictures\2011

The common path for these folders is E:\Pictures. When these images will be backed up to, say X:\Backup, the resulting file structure on the target location will look like:

- X:\Backup\2008
- X:\Backup\2009
- X:\Backup\2010
- X:\Backup\2011

A second catalog contains 4 roots as well, one for every year. However, “2011” is situated on another drive.



The folders are located within the file system:

- E:\Pictures\2008
- E:\Pictures\2009
- E:\Pictures\2010
- F:\Pictures\2011

As one see, there is no common path for the folders above. When these images will be backed up to X:\Backup the resulting file structure on the target location will therefore look like (for colons are not allowed in folder names the ":" from the drive letters will be replaced by "\$"):

- X:\Backup\E\$\Pictures\2008
- X:\Backup\E\$\Pictures\2009
- X:\Backup\E\$\Pictures\2010
- X:\Backup\F\$\Pictures\2011

3.3 EXAMPLES

BackupLighroomFiles.exe

```
-c "C:\Users\MyUser\Pictures\Lightroom\Lightroom 4 Catalog.lrcat"
-t D:\Backup\Images
```

This command copies all images from the default Lightroom catalog to the target folder on drive D:. If any files already exist on the target location, the program will prompt and ask what to do (overwrite or skip).

```
BackupLighroomFiles.exe -c "C:\LR\Catalog.lrcat" -t D:\Backup -r 2
```

This command copies all images having two or more stars from the Lightroom catalog to the target folder on drive D:. If any files already exist on the target location, the program will prompt and ask what to do (overwrite or skip).

```
BackupLighroomFiles.exe -c "C:\LR\Catalog.lrcat" -t D:\Backup -r 3 -e =
```

This command copies all images having exact three stars from the Lightroom catalog to the target folder on drive D:. If any files already exist on the target location, the program will prompt and ask what to do (overwrite or skip).

```
BackupLighroomFiles.exe -c "C:\LR\Catalog.lrcat" -t D:\Backup -r 3 -e > -q
```

This command copies all images having more than three stars from the Lightroom catalog to the target folder on drive D:. If any files already exist on the target location, they will be overwritten.

```
BackupLighroomFiles.exe -c "C:\LR\Catalog.lrcat" -t D:\Backup -r 3 -e < -q -n
```

This command copies all images having less than three stars from the Lightroom catalog to the target folder on drive D:. If any files already exist on the target location, they will be overwritten if the files are newer. Otherwise they will be skipped.

```
BackupLighthouseFiles.exe -c "C:\LR\Catalog.lrcat" -t D:\Backup -r 2 -e >= -q -n  
-l D:\Logs\BackupLighthouseFiles.log -a
```

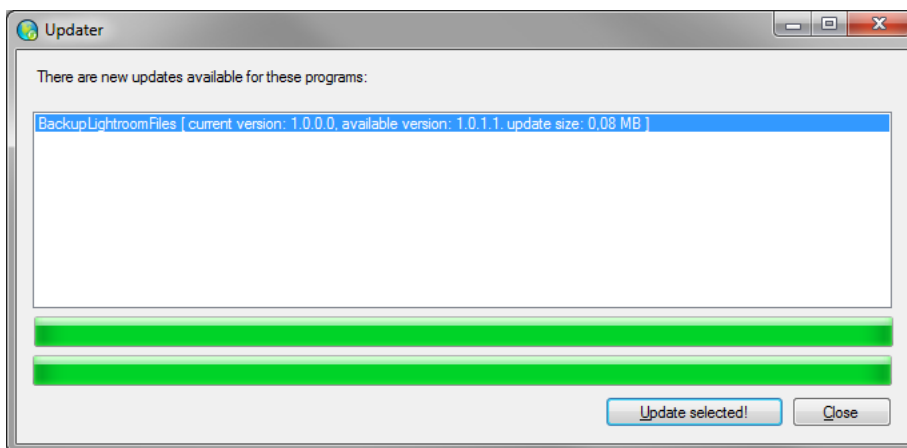
This command copies all images having two or more stars from the Lightroom catalog to the target folder on drive D:. If any files already exist on the target location, they will be overwritten if the files are newer. Otherwise they will be skipped. Any errors will be logged to the file `BackupLighthouseFiles.log` in `D:\Logs`. If the log file already exists (what will be the case after the first run) the log file will not be overwritten, but all new errors will be appended to the end of the log file.

```
BackupLighthouseFiles.exe -c "C:\LR\Katalog.lrcat" -t D:\Backup -r 2 -s -q
```

This command prints the filenames of any image having two or more stars from the Lightroom catalog.

```
BackupLighthouseFiles.exe -u
```

This command looks for new updates for BackupLighthouseFiles. This starts the Updater window that will look online for new program versions.



A END-USER LICENSE AGREEMENT

This program is "Postcardware". If you enjoy this program or think it is helpful, why not sending me a nice postcard? My current address can be found at the end. If you supply me with your email address, I'll try to write back.

YOU MAY install and use this software on any machine that you personally own or control. You may use it in both commercial and non-commercial environments. You may redistribute it including all files and without charging any fee.

YOU MAY NOT sell this program or charge any fee. You may not alter or modify this program or redistribute an altered or modified version of it.

THERE IS NO WARRANTY FOR THE PROGRAM, TO THE EXTENT PERMITTED BY APPLICABLE LAW. EXCEPT WHEN OTHERWISE STATED IN WRITING THE COPYRIGHT HOLDERS AND/OR OTHER PARTIES PROVIDE THE PROGRAM "AS IS" WITHOUT WARRANTY OF ANY KIND, EITHER EXPRESSED OR IMPLIED, INCLUDING, BUT NOT LIMITED TO, THE IMPLIED WARRANTIES OF MERCHANTABILITY AND FITNESS FOR A PARTICULAR PURPOSE. THE ENTIRE RISK AS TO THE QUALITY AND PERFORMANCE OF THE PROGRAM IS WITH YOU. SHOULD THE PROGRAM PROVE DEFECTIVE, YOU ASSUME THE COST OF ALL NECESSARY SERVICING, REPAIR OR CORRECTION.

IN NO EVENT UNLESS REQUIRED BY APPLICABLE LAW OR AGREED TO IN WRITING WILL ANY COPYRIGHT HOLDER, OR ANY OTHER PARTY WHO MODIFIES AND/OR CONVEYS THE PROGRAM AS PERMITTED ABOVE, BE LIABLE TO YOU FOR DAMAGES, INCLUDING ANY GENERAL, SPECIAL, INCIDENTAL OR CONSEQUENTIAL DAMAGES ARISING OUT OF THE USE OR INABILITY TO USE THE PROGRAM (INCLUDING BUT NOT LIMITED TO LOSS OF DATA OR DATA BEING RENDERED INACCURATE OR LOSSES SUSTAINED BY YOU OR THIRD PARTIES OR A FAILURE OF THE PROGRAM TO OPERATE WITH ANY OTHER PROGRAMS, EVEN IF SUCH HOLDER OR OTHER PARTY HAS BEEN ADVISED OF THE POSSIBILITY OF SUCH DAMAGES.

The icon of Updater.exe is licensed under CC Attribution-Noncommercial-No Derivate 3.0
Author: Deleket (Jojo Mendoza)
Homepage: <http://www.deleket.com/>
Commercial usage: Allowed (Author Approval required)
See also: <http://creativecommons.org/licenses/by-nc-nd/3.0/>

If you like to send me a postcard, please write me at:

Klaus Bergmann
Altenberger Str. 4
01277 Dresden
GERMANY

<http://software.imblickfeld.de>